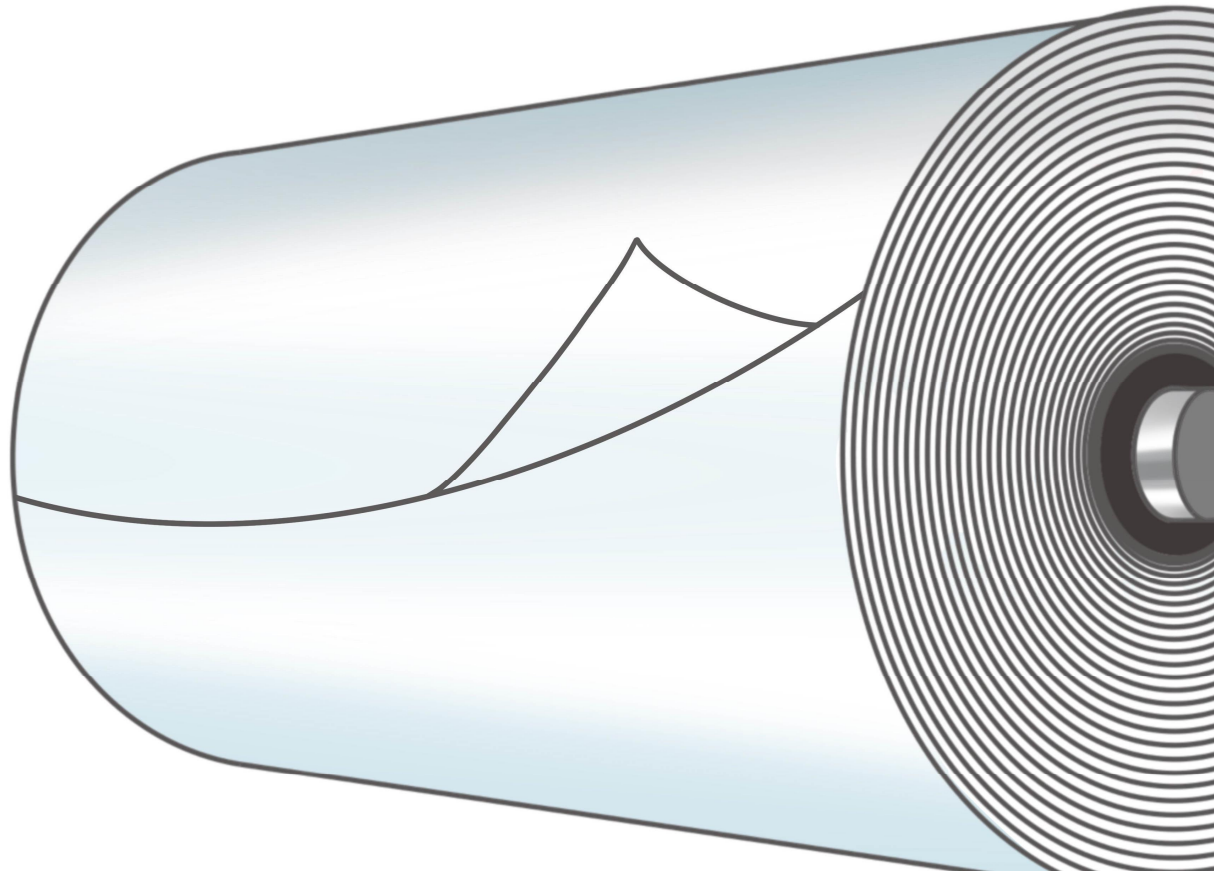
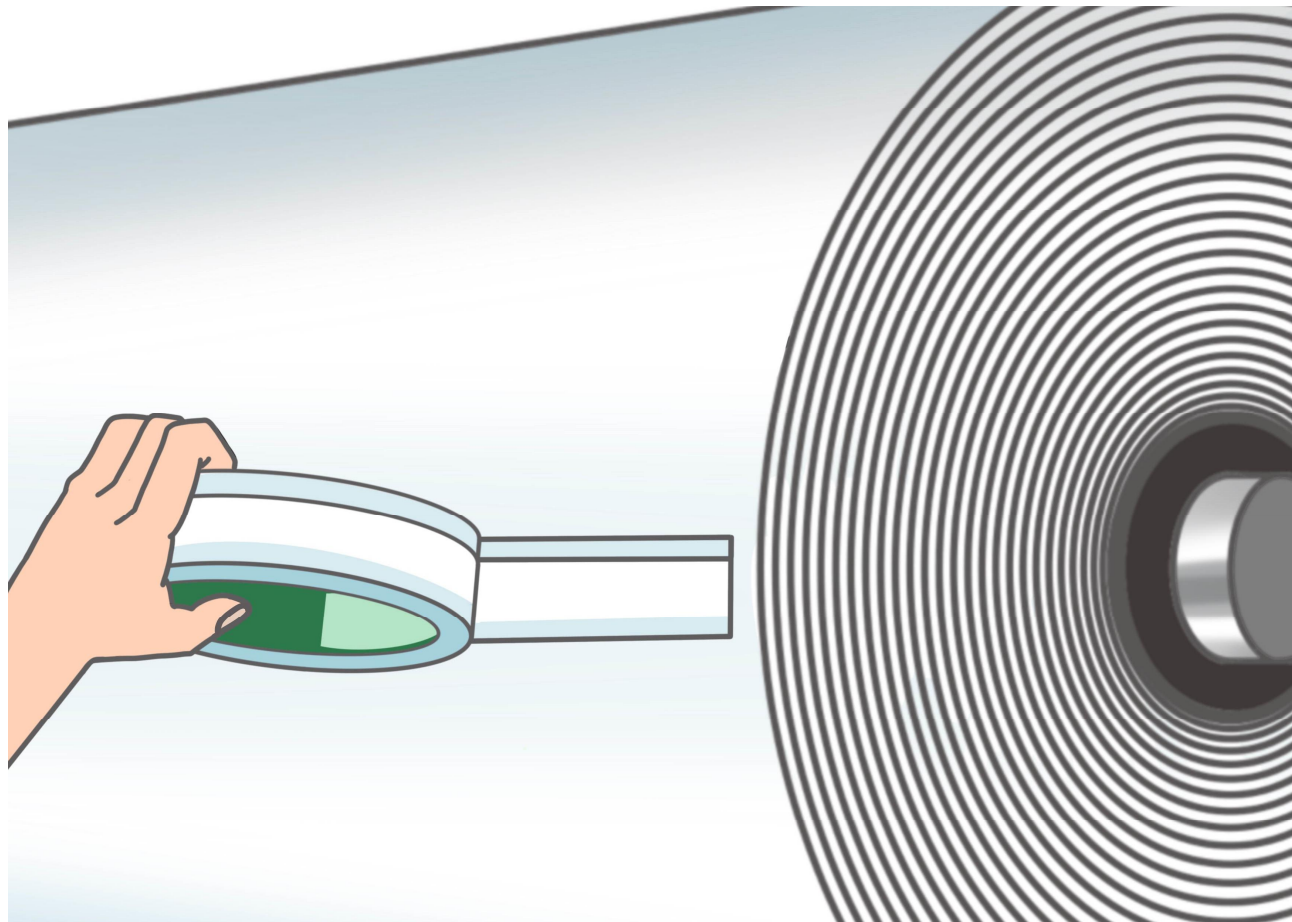


Advance Shengli Abrasive & Adhesive Co.,Ltd.

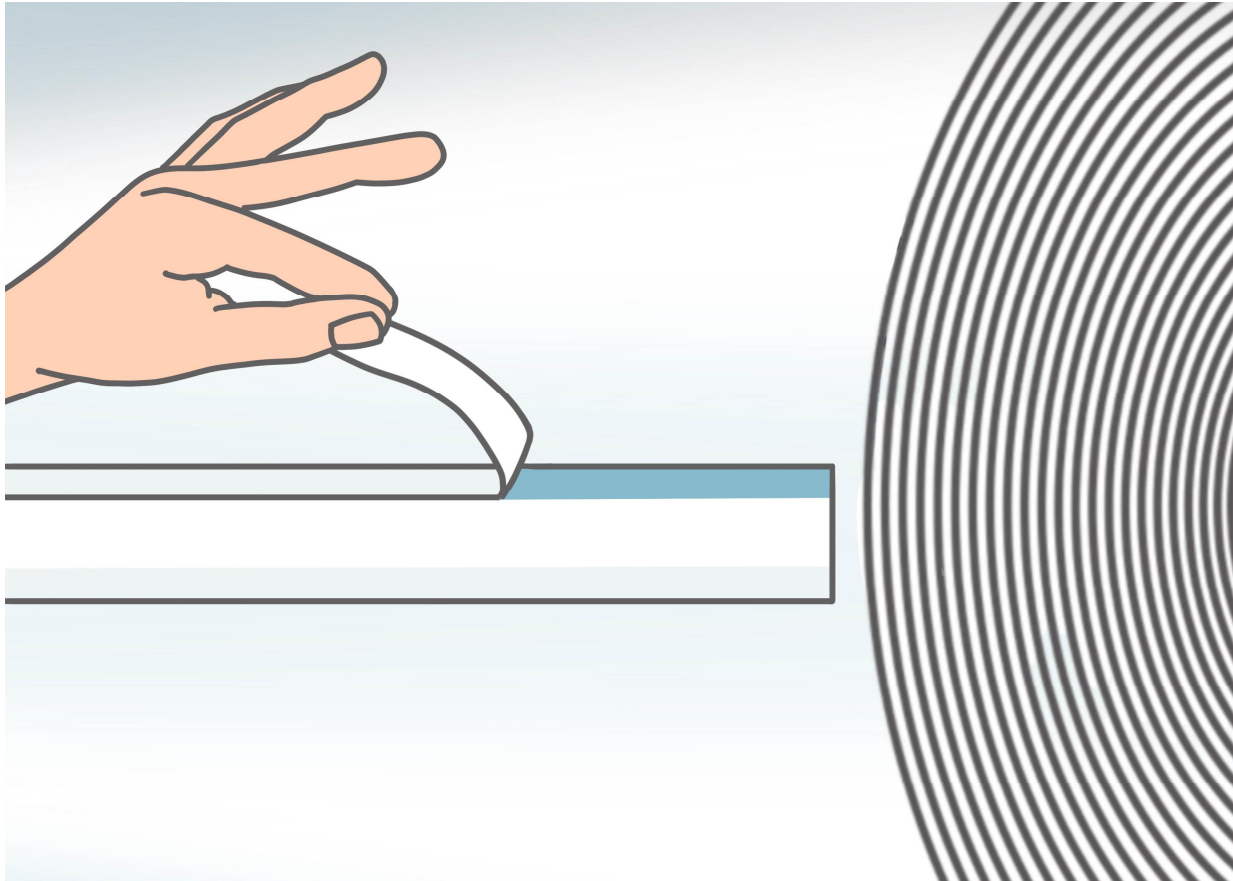


Fold back top paper sheet of the new paper reel

<https://www.ad-adhesive.com>

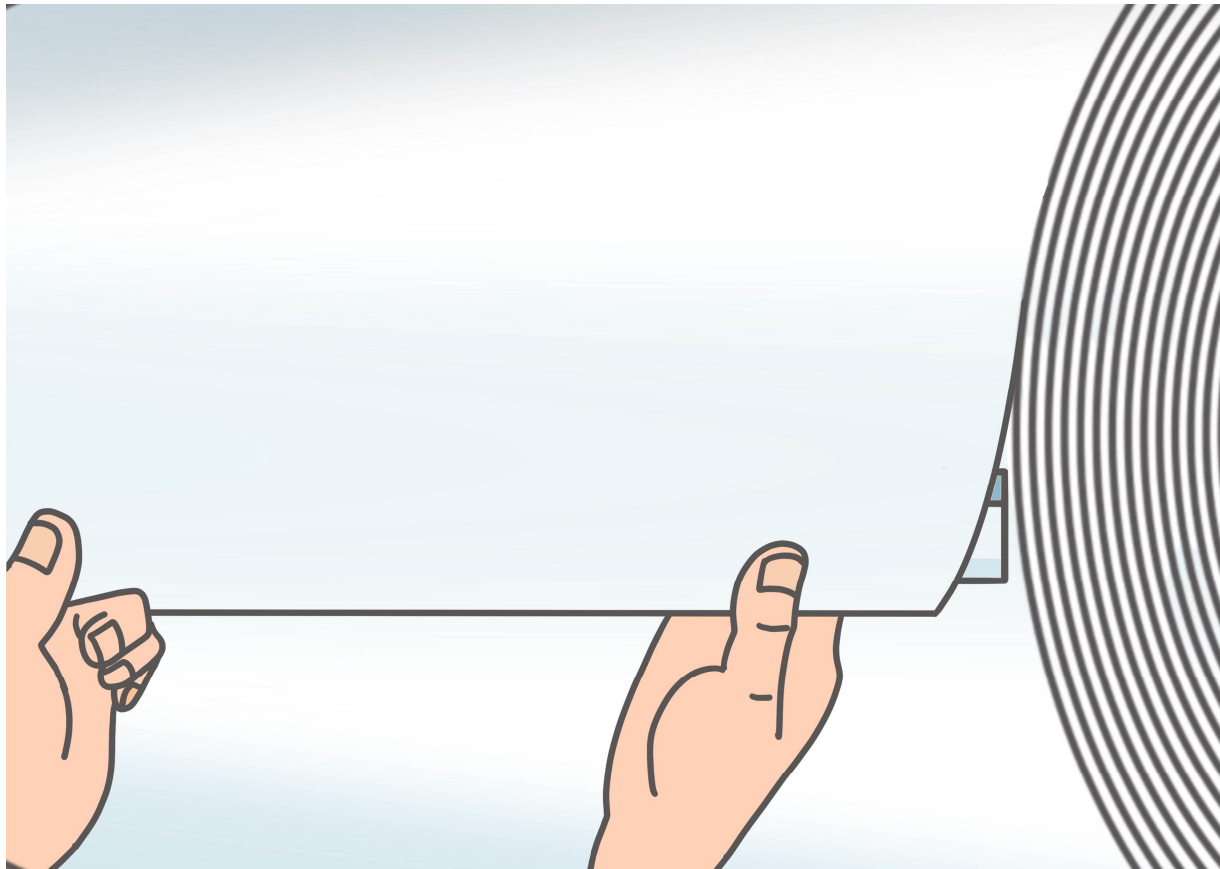


Apply the Splice tape along the tube axis



Remove the narrow part of the liner of Splice tape

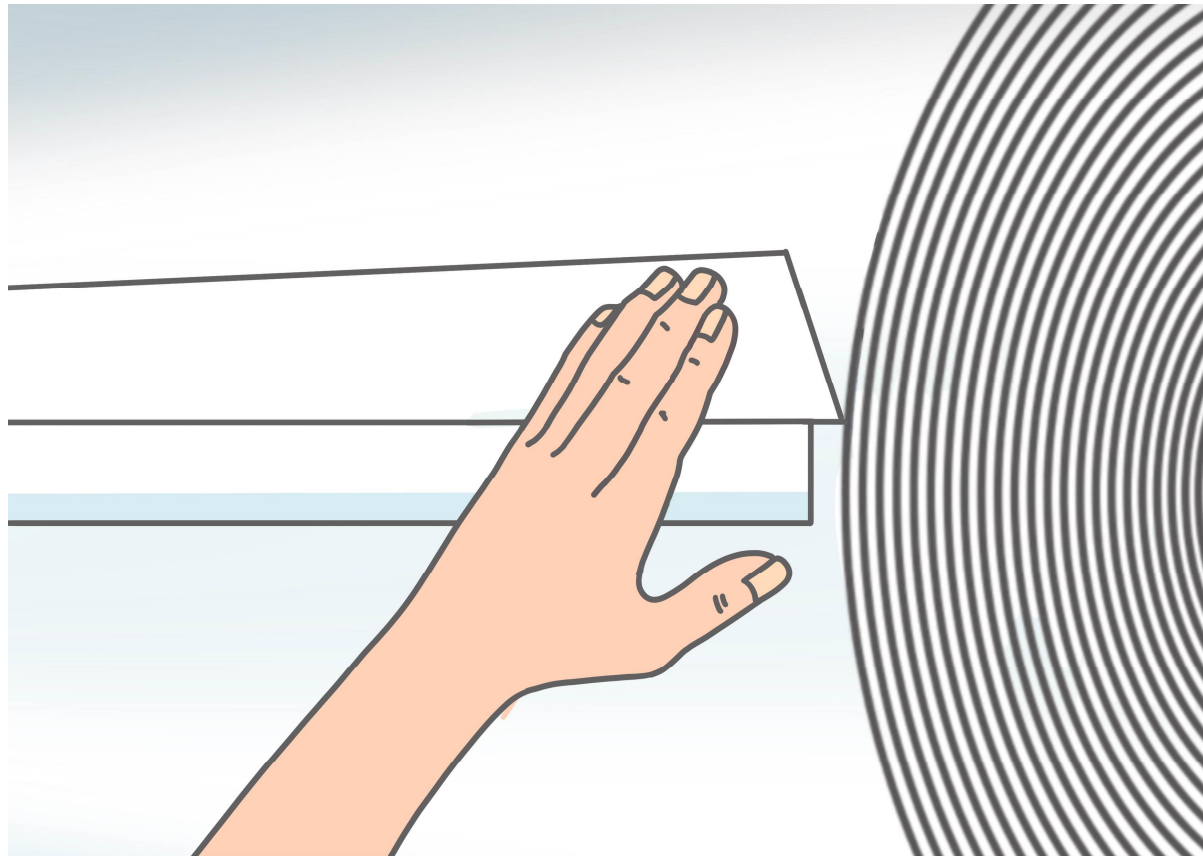
Advance Shengli Abrasive & Adhesive Co.,Ltd.



Stick the top paper sheet on the Splice tape

<https://www.ad-adhesive.com>

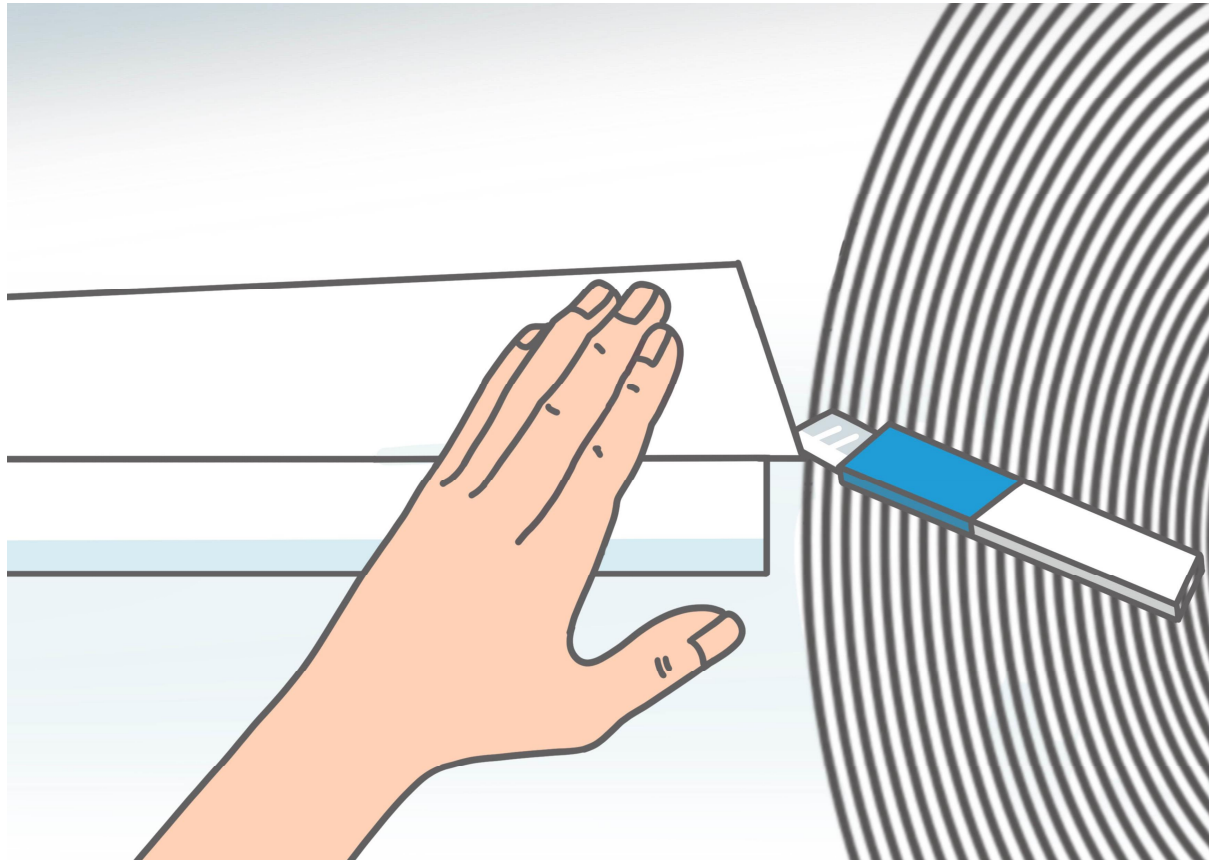
Advance Shengli Abrasive & Adhesive Co.,Ltd.



Fold back the overlapping paper sheet

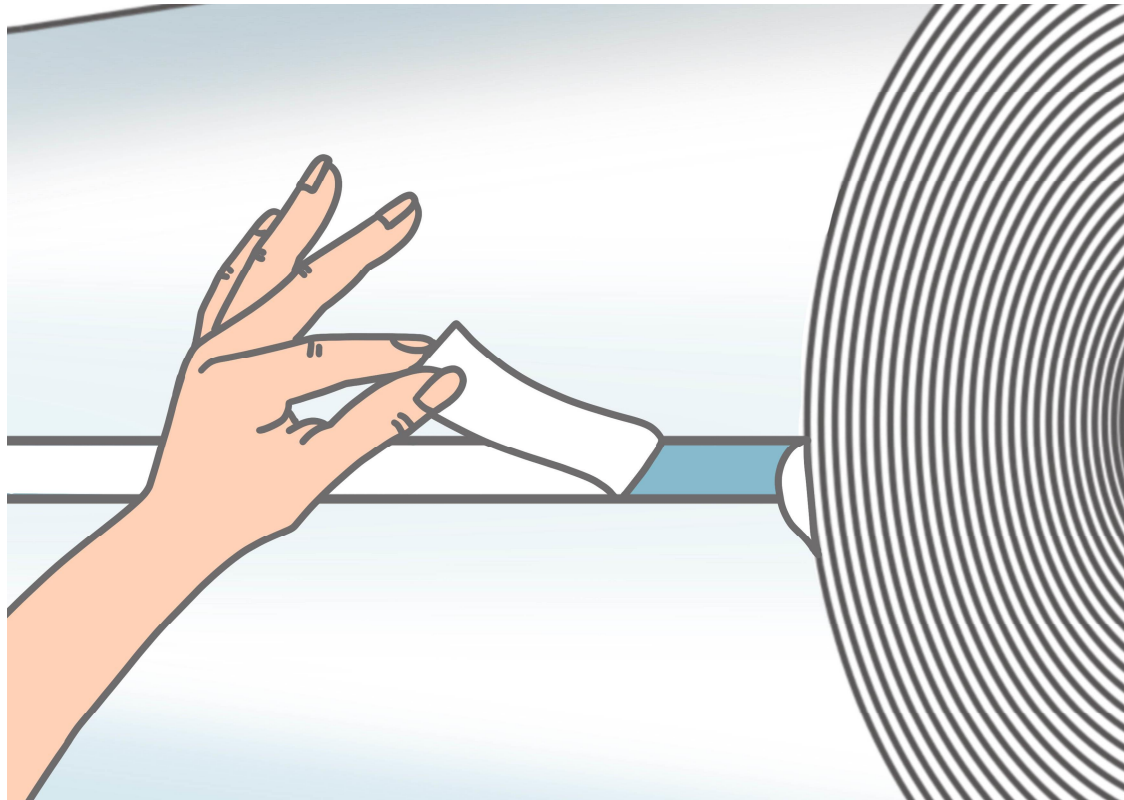
<https://www.ad-adhesive.com>

Advance Shengli Abrasive & Adhesive Co.,Ltd.



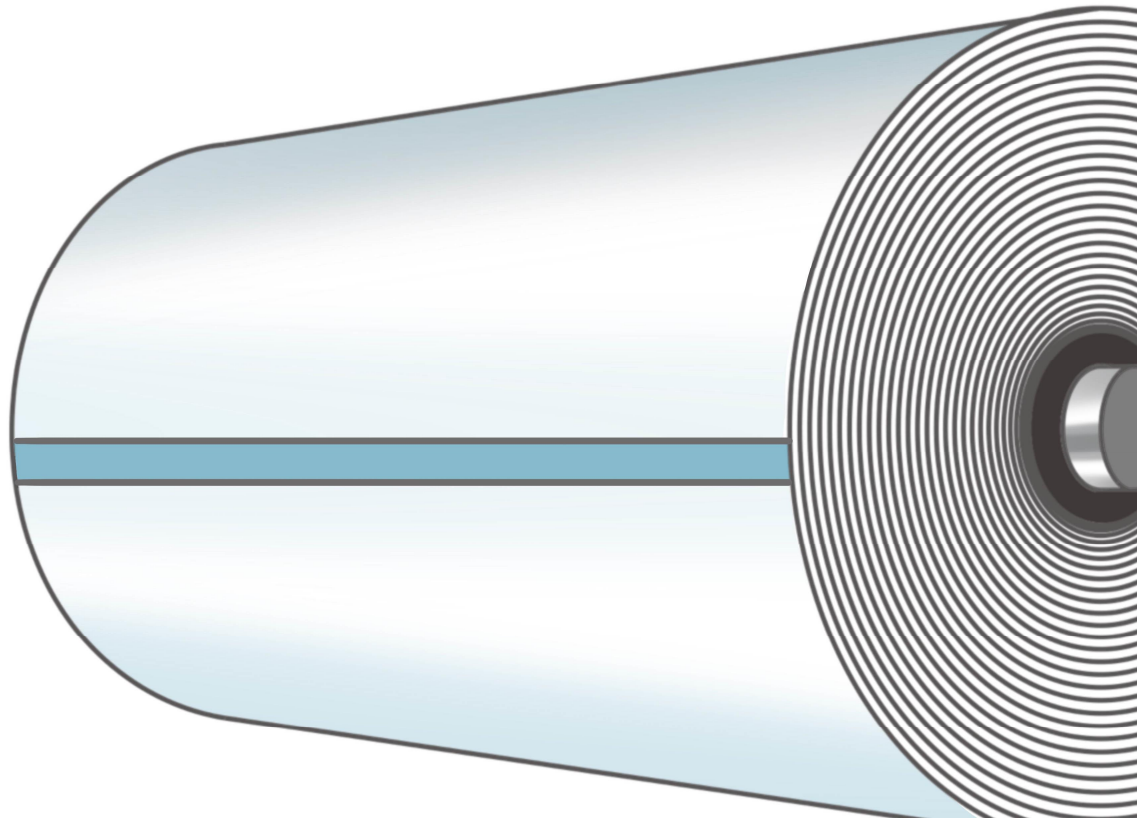
Cut away the overlapping paper sheet

<https://www.ad-adhesive.com>



Remove the other part of liner of Splice tape

Advance Shengli Abrasive & Adhesive Co.,Ltd.



Ready to splice paper reel

<https://www.ad-adhesive.com>